

CANDIDATE
NAME

--

CENTRE
NUMBER

--	--	--	--	--

CANDIDATE
NUMBER

--	--	--	--

PAKISTAN STUDIES

2059/02

Paper 2 The Environment of Pakistan

October/November 2017

1 hour 30 minutes

Candidates answer on the Question Paper.

Additional Materials: Ruler

READ THESE INSTRUCTIONS FIRST

Write your name, Centre number and candidate number in the spaces provided.

Write in dark blue or black pen.

Do not use staples, paper clips, glue or correction fluid.

DO **NOT** WRITE IN ANY BARCODES.

Answer any **three** questions.

If additional space is required, you should use the lined pages at the end of this booklet. The question number(s) must be clearly shown.

The Insert contains Photograph A for Question 1 and Photograph B for Question 3.

The Insert is **not** required by the Examiner.

The number of marks is given in brackets [] at the end of each question or part question.

This document consists of **23** printed pages, **1** blank page and **1** Insert.

(c) Study Fig. 1, which shows death rates in Pakistan between 2000 and 2014.

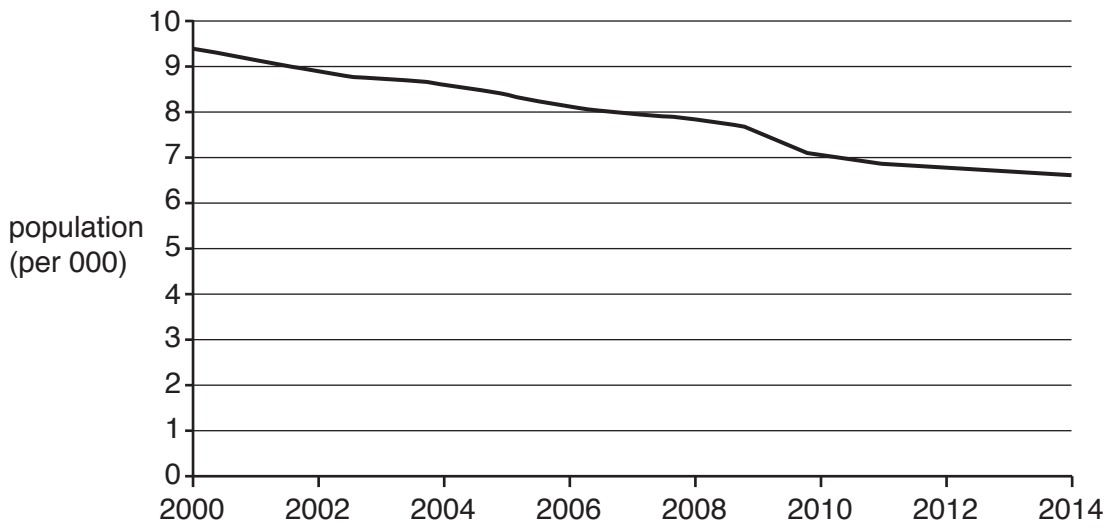


Fig. 1

(i) What is the death rate in 2000?

.....[1]

(ii) How has the death rate changed between 2000 and 2014?

.....[1]

(iii) Give **one** reason why the death rate has changed over this period.

.....
.....[1]

(iv) Explain the impacts of this change in death rates on Pakistan. You should develop your answer.

.....
.....
.....
.....
.....
.....
.....
.....
.....
.....
.....[4]

2 (a) (i) Study Fig. 2, which is a flow diagram of the cement industry.

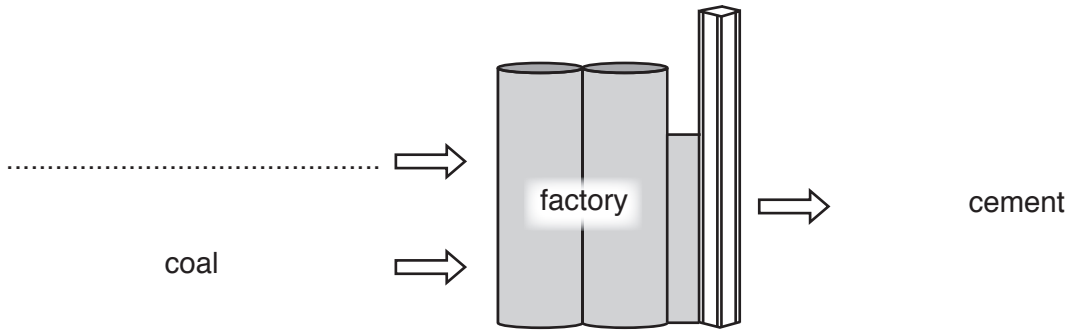


Fig. 2

On Fig. 2, insert the name of a raw material used to make cement in the space provided. [1]

(ii) Give **one** example of primary, secondary and tertiary employment in the cement industry.

Primary

.....

Secondary

.....

Tertiary

.....[3]

(iii) The cement industry is an example of a formal industry. State **three** characteristics of employment in the formal sector of industry.

1

.....

2

.....

3

.....[3]

(b) (i) Name **two** fuels which are imported in large quantities by Pakistan.

1

2 [2]

(ii) Explain the disadvantages to Pakistan of importing large amounts of natural resources. You should develop your answer.

.....
.....
.....
.....
.....
.....
.....
.....
.....
.....
..... [4]

(c) Study Fig. 3, a map which shows the distribution of population in southern Pakistan.

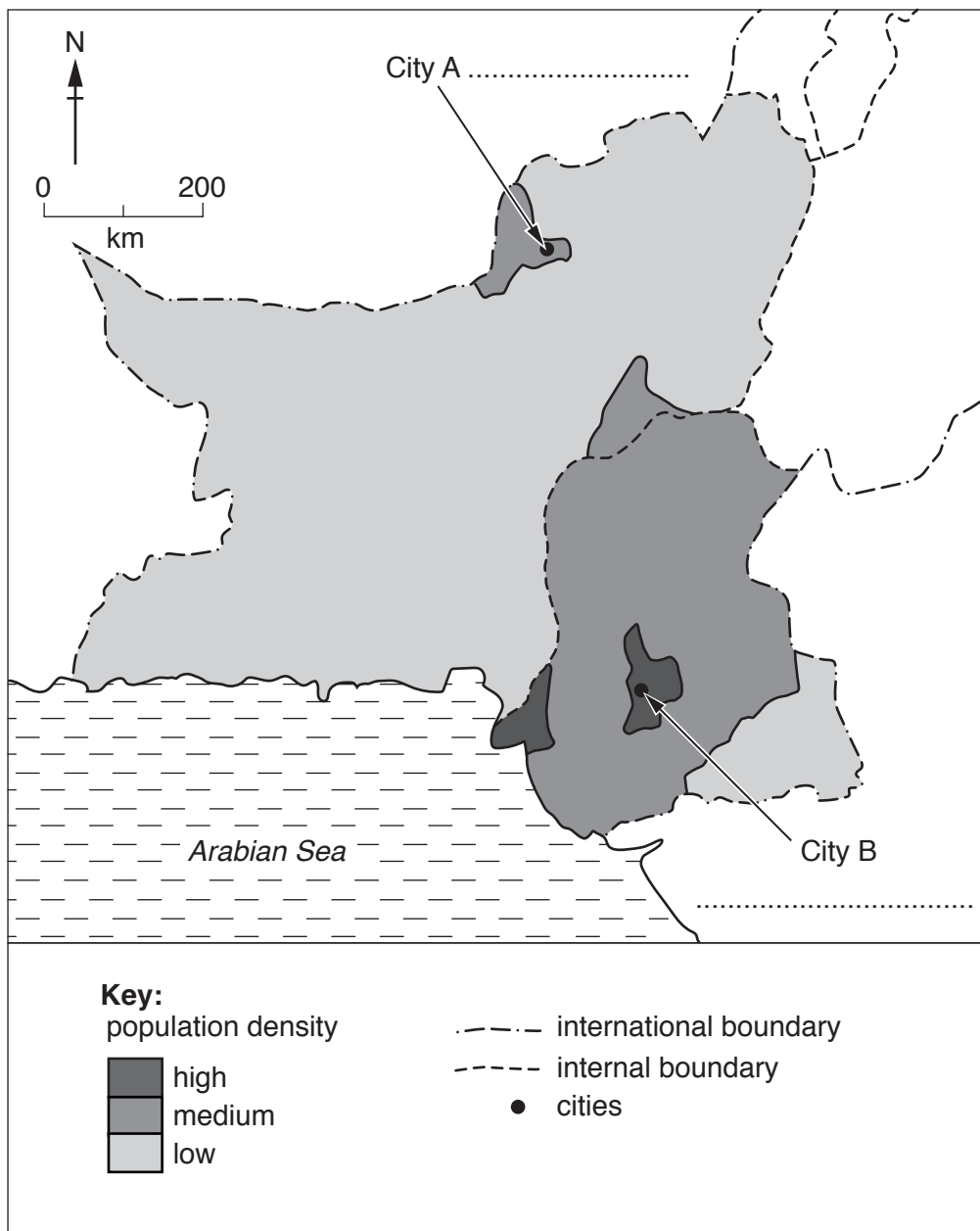


Fig. 3

(i) **On the map** name the following: City A; City B. [2]

(ii) Name **one** area of low population density shown on Fig. 3.

..... [1]

(iii) Describe **three** human factors that cause some areas to have a low population density.

1

.....

2

.....

3

.....[3]

3 (a) (i) A Name a species of fish reared on a fish farm.

.....

B Give **two** uses for the products of fish farms.

1

2 [3]

(ii) Describe the methods used to rear fish on fish farms.

.....

.....

.....

.....

.....

..... [3]

(b) Study Fig. 4, which shows changes in farm size in Pakistan between 1980 and 2010.

Farm size hectares (ha)	Percentage of farms			
	1980	1990	2000	2010
Under 5	74	81	86	89
5–20	24	17	13	10
21 and over	2	2	1	1

Fig. 4

(i) In which year was the percentage of farms under 5 hectares (ha) the smallest?

..... [1]

(ii) Identify the **two** main changes in farm size over the whole period 1980–2010.

1

.....

2

..... [2]

(iii) Suggest a reason for **one** of the changes you have identified in (b)(ii).

.....

..... [1]

(iv) Explain how farm size can affect production on farms in Pakistan. You should develop your answer.

.....
.....
.....
.....
.....
.....
.....
.....
.....
.....
.....
.....
.....[4]

(c) (i) Study Photograph B (Insert).

A Name the crop shown in this photograph.

.....

B Give **one** reason why this crop can be grown in many areas of Pakistan.

.....
.....

C Describe **one** natural requirement for a high yield of this crop.

.....
.....[3]

(ii) Sugar cane is an important crop grown in Pakistan. Suggest **two** reasons why there is an increased demand for this crop.

1

.....

2

.....[2]

4 (a) Study Fig. 5, which is a map of southern Pakistan.

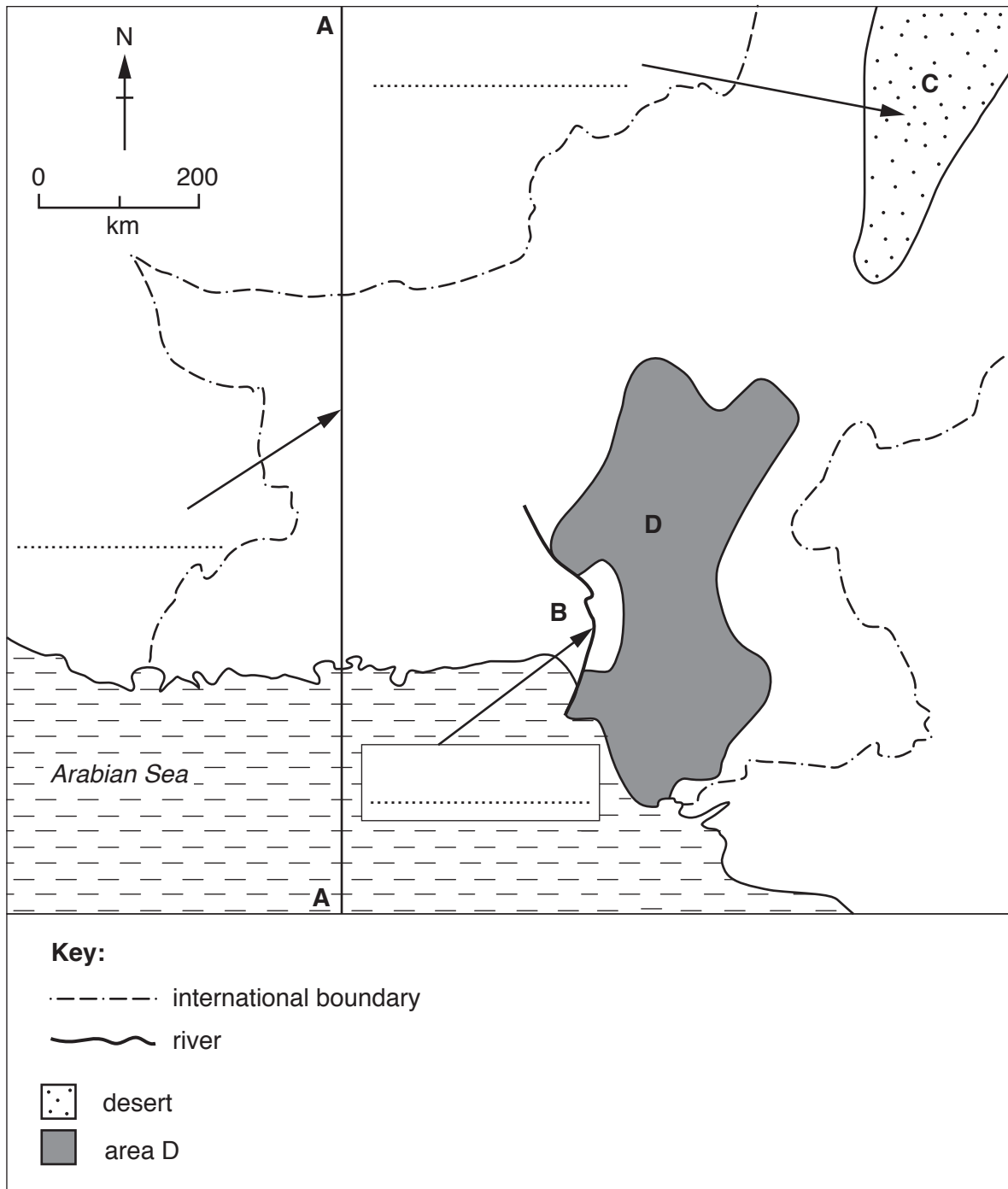


Fig. 5

(i) On the map name the following: Line of longitude A–A; River B; Desert C. [3]

(ii) Describe the natural topography (relief) of Area D on the map.

.....

.....

.....

.....

[3]

(iii) Give reasons why the Indus River floods.

.....

[2]

(b) Study Fig. 6, which shows the road types in the road network of Pakistan’s National Highway Authority in 2016.

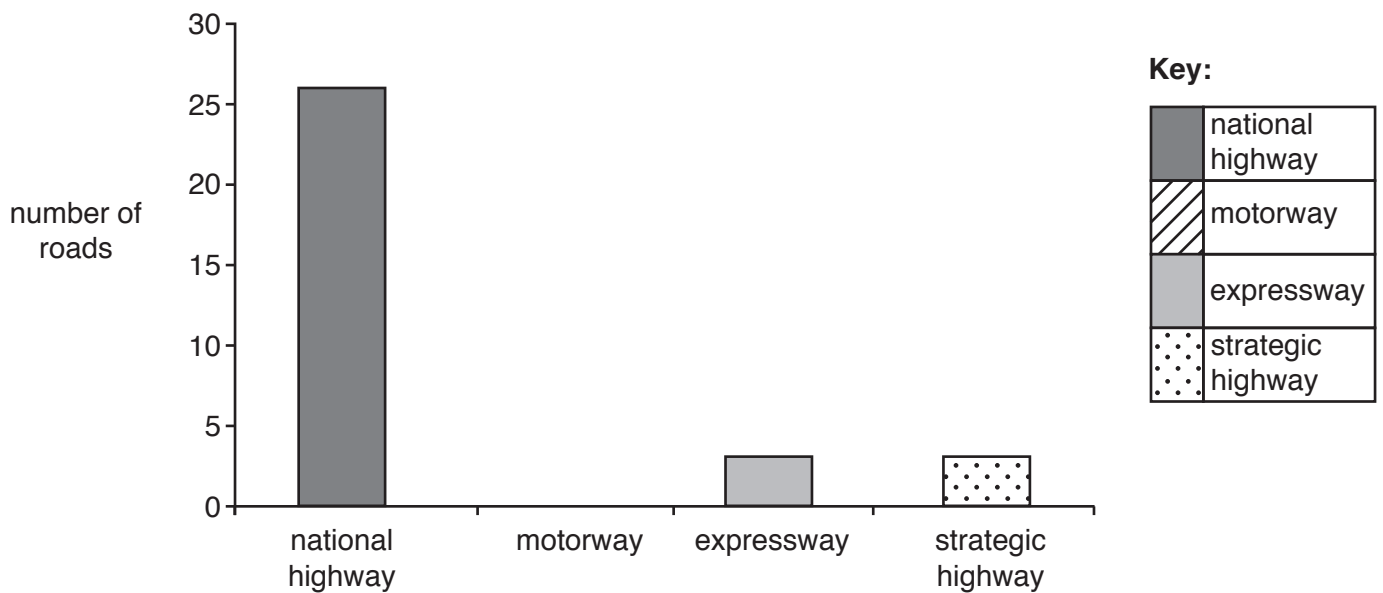


Fig. 6

(i) What is meant by the term ‘road network’?

.....
[1]

(ii) **Complete** Fig. 6 by drawing the bar for the motorway, using the information below and the key provided:

Road type	Number of roads
Motorway	7

[2]

5 (a) Study Fig. 7, which shows climate data for Lahore, Punjab. Lahore has a monsoon climate.

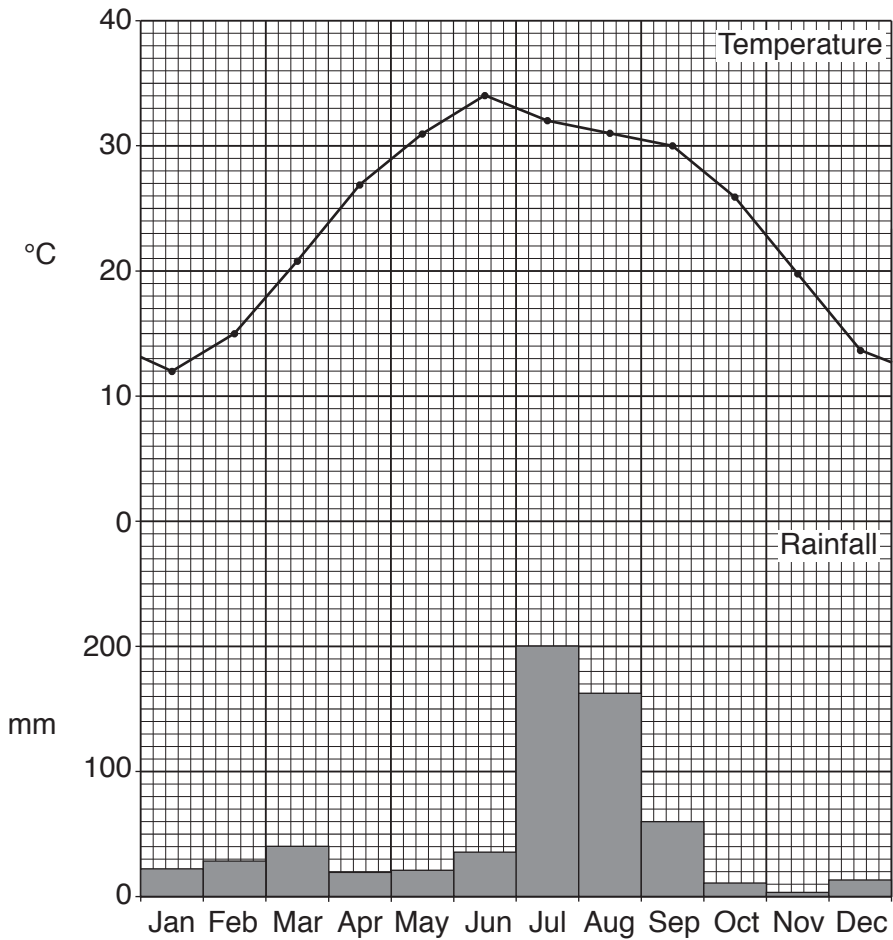


Fig. 7

(i) What is meant by the term 'monsoon'?

.....
[1]

(ii) How does Fig. 7 show that the climate in Lahore is typical of a monsoon climate?

.....

[2]

(iii) Give reasons why Lahore has more rainfall in July than in December.

.....

[2]

(b) Study Fig. 8, which shows the percentage of the population working in Pakistan in 2013–14.

percentage of population working	Male	Female
Rural	69	29
Urban	66	10

Fig. 8

(i) Tick **two** correct statements about Fig. 8 in the table below.

Statement	Tick (✓)
The percentage of female population working in urban areas is larger than in rural areas.	
The percentage of male population working in rural areas is smaller than in urban areas.	
The percentage of males working is greater than females.	
The percentage of people working in rural areas is greater than in urban areas.	

[2]

(ii) Suggest reasons for the differences in the percentage of the population working between rural and urban areas.

.....

.....

.....

.....

.....

.....

.....[3]

(iii) Explain the advantages of mechanisation in small-scale industries in Pakistan. You should develop your answer.

.....
.....
.....
.....
.....
.....
.....
.....
.....
.....
.....
.....[4]

(c) (i) A provincial capital city regularly has the lowest temperatures in Pakistan. Name this city.

.....[1]

(ii) Describe **four** impacts of low temperatures on people who live and work in mountain areas.

1
.....
2
.....
3
.....
4
.....[4]

(d) Read the following two views about possibilities for air transport improvements in Pakistan:

A

It is better to build more runways at Jinnah Airport, Karachi, Pakistan’s largest city.

B

It is better to build airports in smaller cities such as Sialkot and Nok Kundi.

Which view do you agree with more? Give reasons to support your answer. You should consider View A **and** View B in your answer.

.....
.....
.....
.....
.....
.....
.....
.....
.....
.....
.....
.....
.....
.....
.....
.....
.....
.....

[6]

[TOTAL: 25]

BLANK PAGE

Permission to reproduce items where third-party owned material protected by copyright is included has been sought and cleared where possible. Every reasonable effort has been made by the publisher (UCLES) to trace copyright holders, but if any items requiring clearance have unwittingly been included, the publisher will be pleased to make amends at the earliest possible opportunity.

To avoid the issue of disclosure of answer-related information to candidates, all copyright acknowledgements are reproduced online in the Cambridge International Examinations Copyright Acknowledgements Booklet. This is produced for each series of examinations and is freely available to download at www.cie.org.uk after the live examination series.

Cambridge International Examinations is part of the Cambridge Assessment Group. Cambridge Assessment is the brand name of University of Cambridge Local Examinations Syndicate (UCLES), which is itself a department of the University of Cambridge.