

CANDIDATE
NAME

--

CENTRE
NUMBER

--	--	--	--	--

CANDIDATE
NUMBER

--	--	--	--



BIOLOGY

5090/62

Paper 6 Alternative to Practical

October/November 2017

1 hour

Candidates answer on the Question Paper.

No Additional Materials are required.

READ THESE INSTRUCTIONS FIRST

Write your Centre number, candidate number and name on all the work you hand in.

Write in dark blue or black pen.

You may use an HB pencil for any diagrams or graphs.

Do not use staples, paper clips, glue or correction fluid.

DO NOT WRITE IN ANY BARCODES.

Answer **all** questions.

Write your answers in the spaces provided on the Question Paper.

Electronic calculators may be used.

You may lose marks if you do not show your working or if you do not use appropriate units.

At the end of the examination, fasten all your work securely together.

The number of marks is given in brackets [] at the end of each question or part question.

This document consists of **8** printed pages.

(c) The students compared the colour of their solutions after the same length of time. State **three other** variables that the students should have controlled to make their results comparable.

- 1
- 2
- 3 [3]

The students were then provided with a glucose solution **X** of unknown concentration which they tested with Benedict's solution. The result was a yellowish-orange colour.

(d) (i) Use Table 1.1 to suggest what the students may have concluded about the % concentration of glucose in solution **X**.

-
- [1]

(ii) Suggest how the students could determine a more accurate % concentration for glucose solution **X**.

-
-
-
-
- [2]

(e) You are given a 1.0% glucose solution. Describe in detail how you would use it to produce 5 cm³ of a 0.5% glucose solution.

-
-
-
- [3]

- (f) After the students had tested the glucose solutions in Table 1.1 with Benedict's solution, they noticed that a solid (precipitate) had collected at the bottom of the test-tubes.

They decided that finding the mass of the solid was another way of measuring the concentration of glucose in the solution.

Suggest how the students could separate this solid from the solution and obtain its mass.

.....

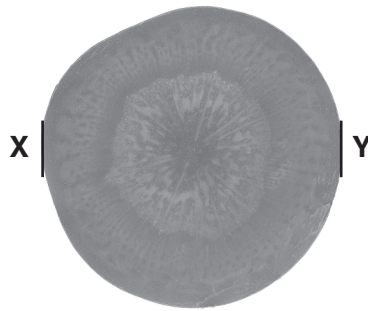
.....

.....

.....[2]

[Total: 16]

2 Fig 2.1 shows a section through the root of a carrot plant.



magnification $\times 1$

Fig. 2.1

(a) (i) Make a large drawing of this section in the space below. On your drawing, label the vascular tissue.

[4]

(ii) On Fig. 2.1 draw a straight line between X and Y. Measure your line and record the length.

..... mm

On your drawing, draw a line in a similar position to the one drawn on Fig. 2.1. Measure this line on your drawing and record it.

..... mm

Calculate the magnification of your drawing compared with the section shown in Fig. 2.1. Show your working.

magnification \times

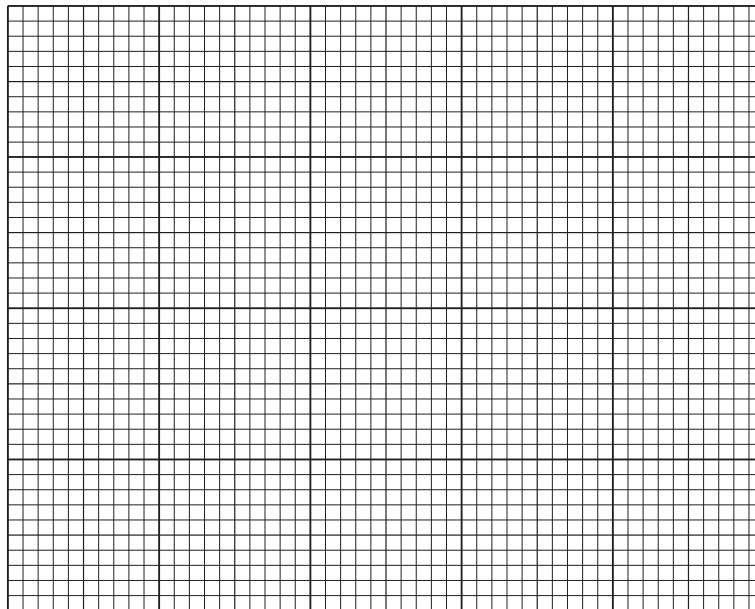
[4]

- (b) Carrots are a source of vitamin C. Some students measured the vitamin C content of fresh and frozen carrots and then measured it again after the carrots had been cooked in boiling water. Their results are shown in Table 2.1.

Table 2.1

carrots	vitamin C/mg per 100g
fresh, uncooked	5.9
fresh, boiled	3.6
frozen, uncooked	2.5
frozen, boiled	2.3

- (i) Construct a bar chart of the data in Table 2.1 on the grid below.



[4]

- (ii) Suggest **two** conclusions the students could reach from these results.

1

.....

2

.....

[2]

- 3 Fig. 3.1 shows a photomicrograph of red blood cells of a person suffering from sickle cell anaemia. Both normal and abnormal red blood cells are shown.

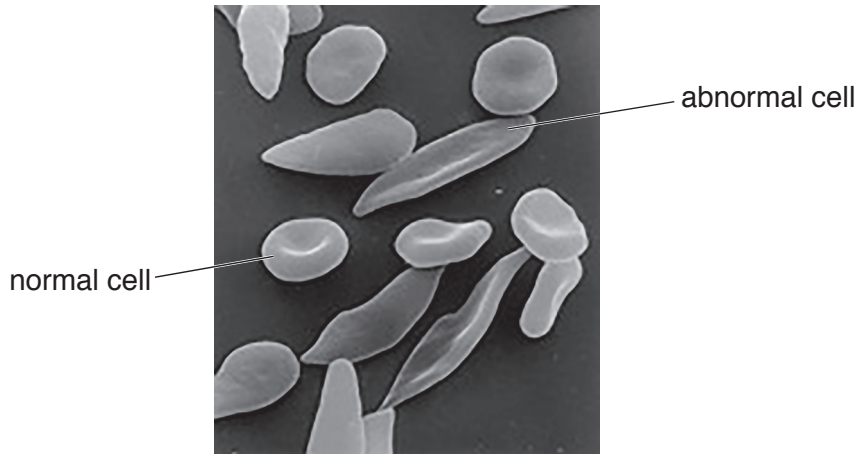


Fig. 3.1

- (a) Use Fig. 3.1 to complete this table:

	normal red blood cells	abnormal red blood cells
number of whole cells		4
shape		
size		

[4]

- (b) The abnormal cells are very rigid and cannot easily bend. This, and their different shape, can lead to problems in the circulation of blood in a person suffering from sickle cell anaemia. Suggest why.

.....

.....

.....

..... [2]

[Total: 6]

Permission to reproduce items where third-party owned material protected by copyright is included has been sought and cleared where possible. Every reasonable effort has been made by the publisher (UCLES) to trace copyright holders, but if any items requiring clearance have unwittingly been included, the publisher will be pleased to make amends at the earliest possible opportunity.

To avoid the issue of disclosure of answer-related information to candidates, all copyright acknowledgements are reproduced online in the Cambridge International Examinations Copyright Acknowledgements Booklet. This is produced for each series of examinations and is freely available to download at www.cie.org.uk after the live examination series.

Cambridge International Examinations is part of the Cambridge Assessment Group. Cambridge Assessment is the brand name of University of Cambridge Local Examinations Syndicate (UCLES), which is itself a department of the University of Cambridge.